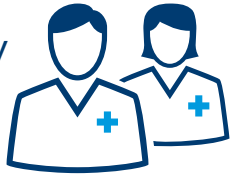


Supporting Ochsner Health Network Providers in a Value-Based World

Inquire today to determine which programs you may be eligible for.

Provider Autonomy & Influence



- Provider-led network
- Provider involvement in governance and operational decision-making
- Advanced models for transforming primary care practices
- Provider-driven data to support outcomes focus

Incentives, Rewards & Shared Savings



- Value-driven contracting options
- Top-performing accountable care network
- Pay for performance
- Growth in exclusive employer health plans
- Payor contracts

Patient Population Growth



- Continual growth in contracts - narrow network plans, MSSP, and employers like Walmart
- Population health modeling and care pathways
- Digital health tools and technology for scaling clinical practices

Population Health Analytics, Technology & Innovation



- Best in class EHR enabling interoperability across the care continuum
- Robust data to support value-driven practice goals, optimal coding and billing
- Leading-edge digital medicine and virtual care technology

Clinically Led Practice Modeling & Care Pathways



- Care design based on population health drivers
- Chronic disease care management support
- Sophisticated tools for medical risk adjustment
- Performance improvement experts, programs and services

Coaching, Education & Advocacy



- Influential voice in value-based contracting, regulatory and policy reform
- Largest LA-managed clinically integrated network (CIN)
- Dedicated coaching and clinical support teams for performance improvement
- Virtual clinical education opportunities

To learn more about network membership opportunities, including best-in-class EHR, email us at OHNadmin@ochsner.org.